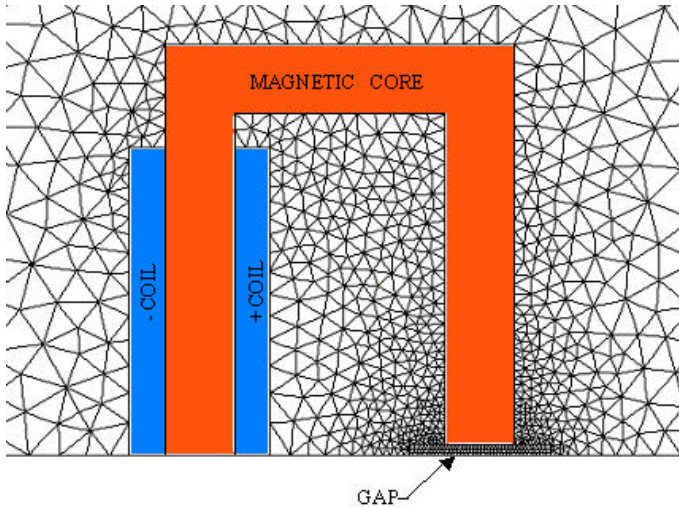
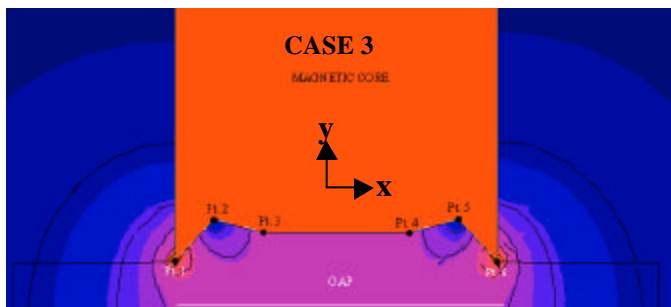


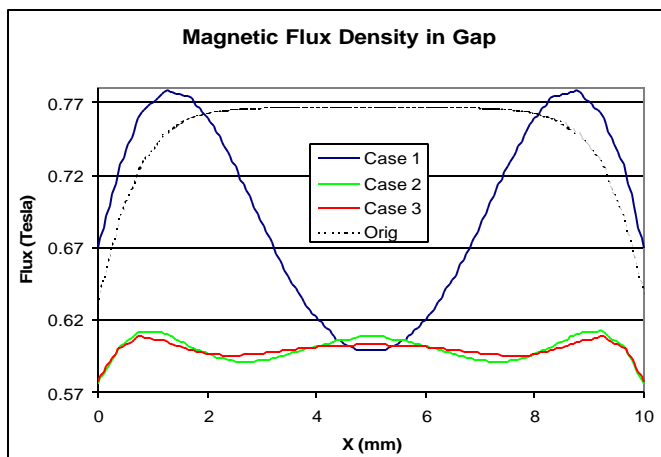
VisualDOC/FLUX2D Magnetic Flux Gap Density Optimization



VR&D has worked closely with Cedrat to show how general purpose optimization can help FLUX2D users design their products.



The optimized design gave the desired uniform flux of 0.6 Tesla by minimizing the SSE along the length of the GAP.



This was accomplished for CASE 3 by varying the Y coordinates of all 6 designable points and the X coordinates for points 2-5.

Design goal is to optimize the geometry of the gap to give either a prescribed point flux at the center, or a uniform flux along the length of the gap for three different cases.

Vanderplaats R&D, Inc.
41700 Gardenbrook Suite 115
Novi, MI 48375
info@vrand.com
(248) 596-1611